



# SCRMO

2018 Annual Report 



## Medical Center Governing Board

Kristine Fuge

Patrick McDonough, MD

Michael Buchite

Dana Frey

Sarah Cormell

John Driscoll

Gurdesh Bedi, MD

Joe Thimm

Connie Erickson

## Step back in Time and look to the Future

*In the Spring of 2010, I had the opportunity to visit Dr. John Ingalls in Webster, Wisconsin. From that visit an important relationship grew, not only for the Ingalls Clinic but also for SCRMC. The ultimate benefactors were the residents of northern St. Croix Valley. This October, due to the efforts of many, a new and expanded Webster Health Center opened. Through collaboration and a commitment to those served, the care delivered will be expanded, to exceed any one person's expectations. We are excited to build on an already strong primary care base adding Counseling and Psychological Services, Wellness, Dental Health, and in the future, mobile imaging capabilities and Specialty Telehealth.*

*Stepping back to Spring 1919, Dr. Jake Riegel returned from war duty and opened a medical office in Cushing, Wisconsin. That Fall, Jake relocated his medical office to St. Croix Falls, Wisconsin. The practice went through many changes during Jake's career and beyond. If Dr. Jake was present today, I am sure he would be amazed to see how SCRMC has changed and grown on the eve of the 100th Anniversary.*

*So what's in store for the next 100 years, 30 years, or 5 years? What we do know is there is a need for a new Regional Health Campus and it will not be the same as what we have today.*

*SCRMC has always redefined itself throughout its history, not being complacent with change, accelerating over the last decade related to market dynamics. As we grow towards the future, we will once again redefine ourselves from a traditional hospital with multiple clinics to one that focuses on health and well-being, serving not only local residents but encompasses the health care needs on a regional basis. There is a significant need for a new regional health campus that will be vibrant and socially and environmentally responsible. Where customers will continue to be proud to choose SCRMC as their partners in health for the next 30 years. That is a next chapter and a vision worth striving for!*

Dave Dobosenski, CEO

# 2018 Year in Review



## the Birth Place

### Cuddle Cot

The Birth Place received a very generous donation from Halo's of the St. Croix Valley. Halo's is an organization that exists to help families through the loss of a child. We received a Cuddle Cot, which is a device that looks like a bassinet, but preserves stillborn babies so that their families have more time to say hello and goodbye. Carissa Carlson, PA, was on the team with the most donations and was asked to nominate a facility to receive the donation. We are gracious that Carissa chose to nominate SCRMC!



### Human Milk

The Birth Place has been working for several years to have human milk available to our patients. The American Academy of Pediatrics recommends that when mother's own milk is unavailable, donor breast milk is the first choice of supplementation, followed by formula supplementation. Donor milk is used when an infant requires supplementation due to various conditions such as hypoglycemia, excessive weight loss or the mother needing to take medications that may be harmful to the baby. Donor milk has long been used to supplement babies in Neonatal Intensive Care Units, but due to the limited number of donors, milk was not available to well newborn units. With the increase in breastfeeding and breast milk donors, birthing units are now eligible to provide this service.

[Click here to find more information about Mother's Milk Bank of Western Great Lakes](#)

Banked human milk is donated by women who are currently breastfeeding their own babies, or who have experienced neonatal loss. Prior to donating, potential donors complete a health screening and blood tests. Breast milk is pasteurized to remove bacteria while retaining the myriad of nutrients available in human milk. The milk that SCRMC is receiving is from the Mother's Milk Bank of the Western Great Lakes. The first batch of milk was donated by the Polk County Breastfeeding Coalition. We are so proud to offer this service to our patients.



### Newborn Photography

We just celebrated our 3rd anniversary of offering professional newborn photography at **The Birthplace**. We are thrilled to have Amber Swanson Lindo and Renee Weinzierl available to take photos of every baby that is born at SCRMC. In May, two beautiful gallery walls were added in our unit to showcase this wonderful service.

# SCRMC Breast Center

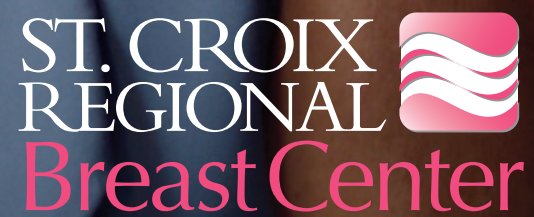


## Shelley's Story

Like anyone, Shelley was unprepared for the possibility of having cancer. After additional testing, she received the news

that not only did she have breast cancer but she also tested positive for the HER2 Gene, an aggressive form of breast cancer. From her first mammogram until now, Shelley's care team explained everything to her and guided her throughout the entire process. "If I hadn't gone in for my mammogram, they never would have found it and I would not be able to grow old with my husband or see my children grow and get married."

[click here to watch Shelley's Story](#)



[click here to watch Patty's Story](#)

## Patty's Story

Patty was faithful about going in for her mammograms and then she just quit going. She let six years lapse before she went in for her next mammogram. Her mammogram showed a lump and Patty was diagnosed with a slow growing form of breast cancer. Patty's team of caregivers customized a treatment plan just for her, along with the breast care navigator being by her side every step of the way.

## Breast Center Care Team

St Croix Regional Medical Center offers women and their families the expertise, information and support they need to make choices about breast care right in their primary care setting.

The Breast Care Team consists of professionals who specialize in diagnosing and caring for women with breast cancer to providing multidisciplinary care right here in St Croix Falls. The Breast Care Team consists of:

- Nurse Navigators to assist with appointment scheduling, education and support services
- Board Certified General Surgeons who specialize in benign and malignant breast care, as well as high risk assessments
- Plastic Surgeon who provides reconstruction services
- Medical Oncologists for onsite consultation and infusion services in either St. Croix Falls or Frederic
- Genetic counseling services and testing
- Partnerships with the Cancer Center of Western Wisconsin for Radiation Oncology services
- Pathology services provided by HPA, one of the top pathology groups in the Twin Cities
- Certified Mammography Technologists and Genetic Counselors, all working together to provide you with the best possible care
- Screening and diagnostic testing

# Concussion Awareness

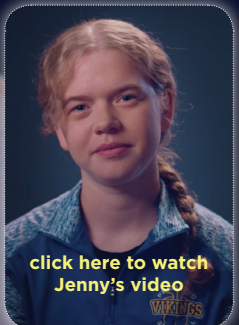
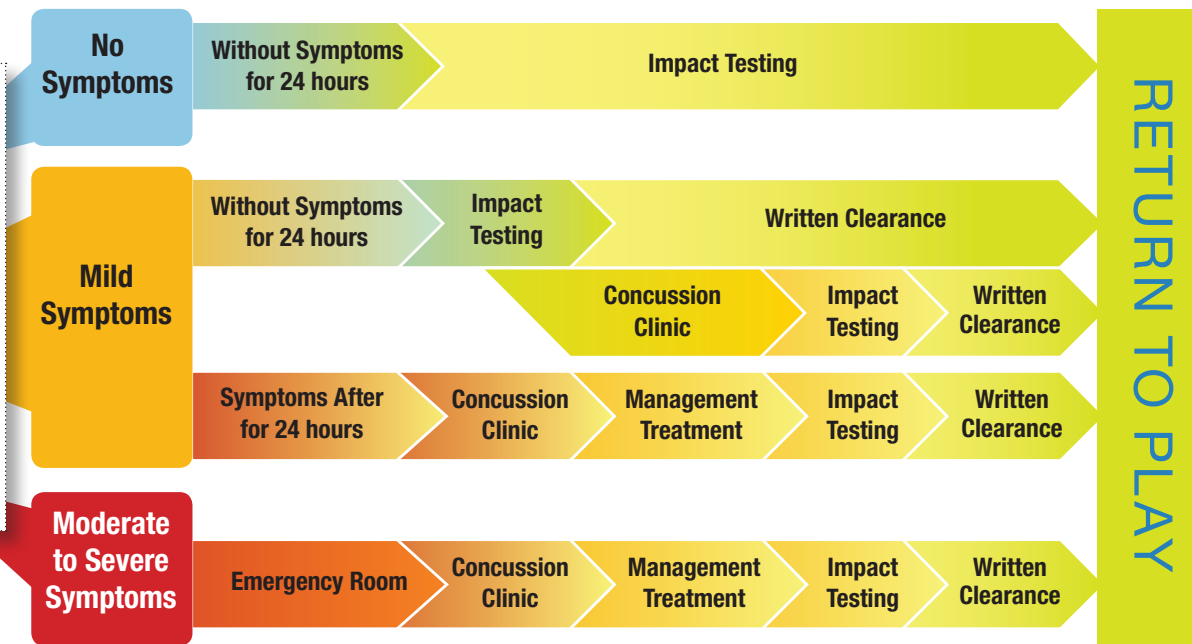


## Concussion Clinic

All school Athletic Trainers have incorporated apps (iPads) into their concussion assessments that connects the information to the Kinisi physician the student-athlete is seeing.

- The Concussion Clinic added Jonn Dinnies, PA and Leah Jacobs, FNP as providers to assist with northern patients.
- Integrated physical therapy and occupational therapy into comprehensive concussion care visit.

Athlete sustains Concussion-like Injury



## Jenny's Story

Jenny, 18, is an outgoing, friendly, and compassionate teenager. She's also a competitor, who has loved sports since she was a little girl. But during her freshman year in high school, she was sidelined by a brain injury during a football game that would affect her love for basketball.

Jenny quickly established her reputation as a force to be reckoned with on the basketball court. Some minor injuries kept her on the bench from time to time, but Jenny was thriving on the court.

That was until her freshman year, during a football game, when Jenny sustained her second incident while running to pick up the football tee from the field. After an evaluation by her athletic trainer and SCRMC staff, it was deemed a concussion.

Under the advice of her provider, Jenny had a week of complete rest, both physically and mentally. Despite the rest, she continued to experience intense concussion-associated symptoms, such as constant headaches, dizziness and slowed reaction times. Jenny wasn't getting better and was referred to the Concussion Clinic at the Kinisi Institute for Movement located at SCRMC.

Jenny's concussion was severe and she was at risk for falling behind in school, mood changes, sleeping problems and more. She had a long road to recovery ahead of her but with the help of the Concussion Clinic, they were able to help Jenny through her recovery.

# St. Croix Valley Health Care Foundation



The announcement of the Health Care Advocate Award to Dr. Cheryl Cermin of St. Croix Falls was the highlight of the 2017 Fall Gala. The award is given annually to recognize the efforts of an individual who promotes the ideals of health care and has contributed countless hours to this cause.

Dr. Cermin began her career as a dental hygienist before enrolling in the University of Minnesota School of Dentistry. In 1990 she earned her degree in orthodontics before completing a residency in oral and maxillofacial surgery. Here is where she devised a special procedure to treat children with cleft lip and palate. In 2001, she moved to St. Croix Falls to begin her practice in orthodontics. Besides her St. Croix Falls practice, Dr. Cermin also works a few days per month at Gillette Children's Hospital and continues to take care of children born with a variety of craniofacial anomalies.

*Congratulations, Dr. Cermin, and thank you for your leadership in providing excellent health care and for advocating health care in our region.*

Dr. Cermin is also the founder of LEAP, an organization that travels to foreign countries to take care of children born with cleft lip and palate. Without these surgeries and specialty appliances, survival of children born in these countries is slim. Dr. Cermin was not only recognized for her charitable work abroad but also here in our own community.

# Webster Health Center



After nearly two years of planning, the groundbreaking ceremony for the new Webster Health Center was held on October 3, 2017. The new Webster Health Center is located on Hwy 35. The health center provides medical, dental, physical rehabilitation, counseling and wellness services. The center also contains a community meeting space.

Webster Health Center is designed as a 23,000 square foot, one-story building with 19 exam rooms including two procedure rooms, a dental office, space for community classes and a fitness center adjacent to physical rehabilitation.

“There are many changes taking place in the health care industry. This new center enables us to prepare for the future needs of the community by expanding access to quality care in a modern facility with the latest equipment and technology,” said Dave Dobosenski, SCRMC CEO.

Leah Jacobs, FNP  
and John Ingalls, MD

# Volunteer Partners



In 2017,  
125 Volunteer  
Partners gave  
**15,630.50**  
hours  
in service;  
raised and  
donated  
**\$16,686.16**

## Donations towards:

- Vectra Genisys 2 (Unity)
- Bariatric treatment table (Webster)
- Chapel furnishings
- Spiritual Care materials (Med/Surg, ER, Surgery)
- Student scholarships \$6,500 awarded to 12 students

## Kathy Nesgoda Scholarship for Nursing

- Amy Schreyer (Chisago Lakes High School) \$500
- Geena Challeen (Osceola High Schools) \$500
- Sarah Craig (Bethel University) \$1000

## TeBina Boomgarten Scholarship

- Juliette Martin (Chisago Lakes) \$500
- Gina Virga (Chisago Lakes) \$500

## Patricia Route Scholarship

- Kalli Christenson (St. Croix Falls High School) \$500

## Volunteer Partners Scholarship

- Mandy Rochel (Chisago Lakes) \$500
- Brooke Thaemert (St. Croix Falls High School) \$500
- Given in Dr. Lloyd Olson's name:**
- Tasian Arjes (Luck High School) \$500
- Lindsay Mattson (Luck High School) \$500

## Dallenbach Scholarship

- Joseph Formanek (Webster High School) \$500
- Jessica Bartz (Chisago Lakes) \$500

# Community Benefits

Bike Rodeos  
 Back Pack Programs  
 Blue Zones: Healthy Communities  
**Burnett County Community Resource Center**  
 Burnett County Breastfeeding Coalition  
 Car Seat Safety Clinics  
**Cancer Center of Western Wisconsin**  
 Caregivers Conference  
 Chamber of Commerce Events in Lindstrom, St. Croix Falls, Balsam Lake, Siren, Webster and Frederic  
 Chisago Lakes Community Education Advisory  
 Chisago Lakes Middle School Health Fair  
 Chisago Lakes Quality of Life Committee  
**City of Trails**  
 Community CPR Classes  
 Community Club Events in Milltown and Luck  
 Diabetes Night Out  
 Diabetes Prevention Classes  
 Family and Childbirth Education Classes  
 Fitness Classes  
 Fitness on the Beach  
 Final Affairs Conference  
 Frederic ACS Walk for Life  
**Gandy Dancer Trail Marathon**  
**Health Burnett**  
 Insulin Incentive Program  
**Kinship Program**  
 Kindergarten Tours  
 Luck School District Health Fair  
 Milltown Community Kids Night Out  
 Mom and Baby Expo  
 National Night Outs  
 Pamper Me Pink Breast Health Event  
**Polk County Mental Health Task Force**  
 Polk County Obesity Committee  
 Polk County Alcohol Committee  
 Red Cross Blood Drives  
 Safe Start Driving School  
 Safety Camp  
 Siren School Health Fair  
 St. Croix Falls Middle School Health Career Tours  
 St. Croix Valley Community Resource Center  
 Support Groups—Diabetes, Chronic Pain, Breastfeeding, Grief  
 Unity Safe Halloween Trunk or Treat  
 Webster School District Health Fair  
 Wellness Coaching  
 Women's Health Conference  
 Worksite Wellness



Dr. Jamey Sotis at the "Pamper Me Pink" Breast Health Event

# Sponsorships

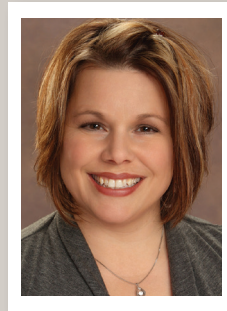
Chisago Lakes Safety Camp  
 Gandy Dancer Flyin Drive In  
 ADRC of NW WI  
 Franconia Sculpture Park  
 Webster Education Foundation  
 Luck Alumni 5k  
 Special Olympics of Polk County  
 Crystal Ball Farms  
 Grace Fund  
 Options for Women Tri Life Care  
 Northwest Passage  
 American Cancer Society Relay for Life  
 Falls Chamber of Commerce  
 The Salvation Army  
 Chisago Lakes Chamber of Commerce  
 Together for a Cure  
 SCF Royalty Program  
 Burnett Area Arts Group  
 Interfaith Caregivers  
 Polk County Mental Health Task Force  
 Family Resource Center of St. Croix Valley  
 STAR Education Foundation  
 Gandy Dance Trail Marathon  
 Indianhead Chorus  
 Taylors Falls Lighting Festival  
 Adoray Home Care and Hospice  
 St. Croix Falls School District  
 Frederic School District Homecoming  
 Osceola Community Health Foundation  
 River's Rally  
 Chisago Lakes Chamber of Commerce  
 Feed My Starting Children  
 St. Croix Falls Farmer's Market  
 Family Resource Center of St. Croix Valley  
 Dresser Osceola Garfield Fire  
 Family Resource Center of St. Croix Valley  
 Adoray Home Care and Hospice  
 Music on the Overlook  
 Essential Connections for Families  
 Party for a Lifetime Cancer Fundraiser  
 Festival Theater  
 Polk County Mental Health Task Force  
 Kinship of Polk County  
 Sexual Assault Response Team  
 American Cancer Society Relay for Life  
 giveBIG  
 Local Lions Club  
 Western Wisconsin Health Foundation  
 Angels Island  
 Let's Go Fishing  
 Chisago Lakes Rotary  
 Partners of WHA  
 City of Trails  
 Falls Sampler  
 Making Connections Event  
 Harmony in the Park  
 Anna Antonich Foundation 5K  
 St. Croix Falls Senior Class Lock In  
 Osceola Community Health Foundation  
 Party for a Lifetime  
 Webster Education Foundation  
 Family, Career, and Community Leaders  
 of America  
 Chisago Lakes Area Wrestling Foundation  
 Family Resource Center St. Croix Valley Gala  
 Woolly Bike Club Bike Race



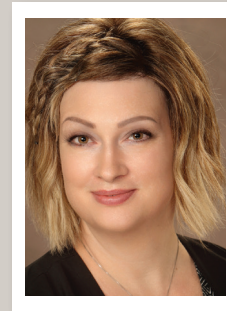
# New Staff at SCRMC



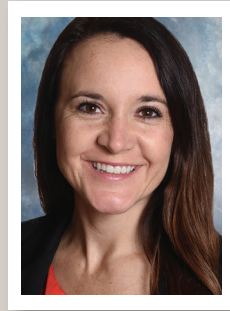
**Hannah Hoffner, PA-C**  
Family Medicine/  
Urgent Care



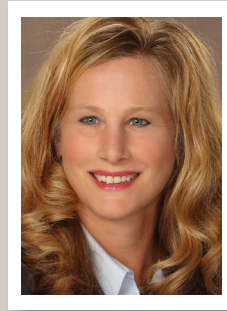
**Tina Salmonson, FNP**  
Family Medicine/  
Urgent Care



**Erin Vogland, FNP**  
Family Medicine



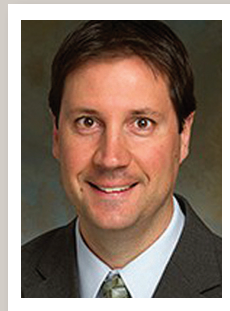
**Kelly Rabe, PA**  
Cardiology  
HEALTHPARTNERS MEDICAL GROUP



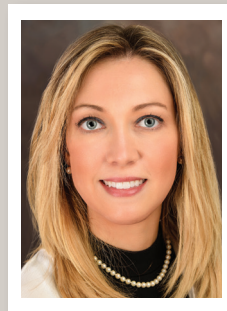
**Jeanne Johnson,  
MD, FACS**  
General Surgery



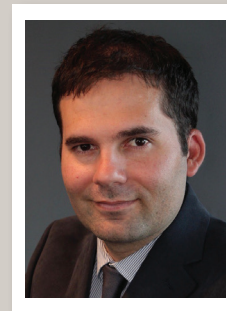
**Scott Peterson, DO**  
Ophthalmology



**Shaun O'Keefe, PA-C**  
Orthopedics  
TWIN CITIES ORTHOPEDICS



**Marisa Spencer, MD**  
Gastroenterology



**Lucas Pineda  
Bernal, MD**  
Rheumatology

# Outstanding Employees



**July 2017**  
**Jaime Anderson, RN**  
Clinic Nursing Supervisor  
Clinic Nursing  
St. Croix Falls



**August 2017**  
**Lisa Rohm**  
Environmental Services  
Manager—Environmental  
Services



**September 2017**  
**Jodi Arrowood**  
Pharmacist  
Hospital Pharmacy



**October 2017**  
**Barb Lindberg, RN**  
Staff RN - Med/Surg  
St. Croix Falls



**November 2017**  
**Karen Bassett**  
Unit Coordinator—Patient  
Access Services, Lindstrom



**December 2017**  
**Whitney Gindt**  
Sr. Nutrition Services  
Associate—Nutrition Services  
St. Croix Falls



**January 2018**  
**Dorothy Turner, RN**  
Clinical Coordinator/Charge  
Nurse—Med/Surg  
St. Croix Falls



**February 2018**  
**Tonia Erickson**  
Unit Coordinator—Patient  
Access Services  
Lindstrom



**March 2018**  
**Wendy Charles**  
MRI Technologist—MRI  
St. Croix Falls



**April 2018**  
**Tammy Eley**  
Staffing Coordinator  
Med/Surg, St. Croix Falls



**May 2018**  
**Laurie Loehr, RN**  
Supervisor—Clinic Nursing  
Unity

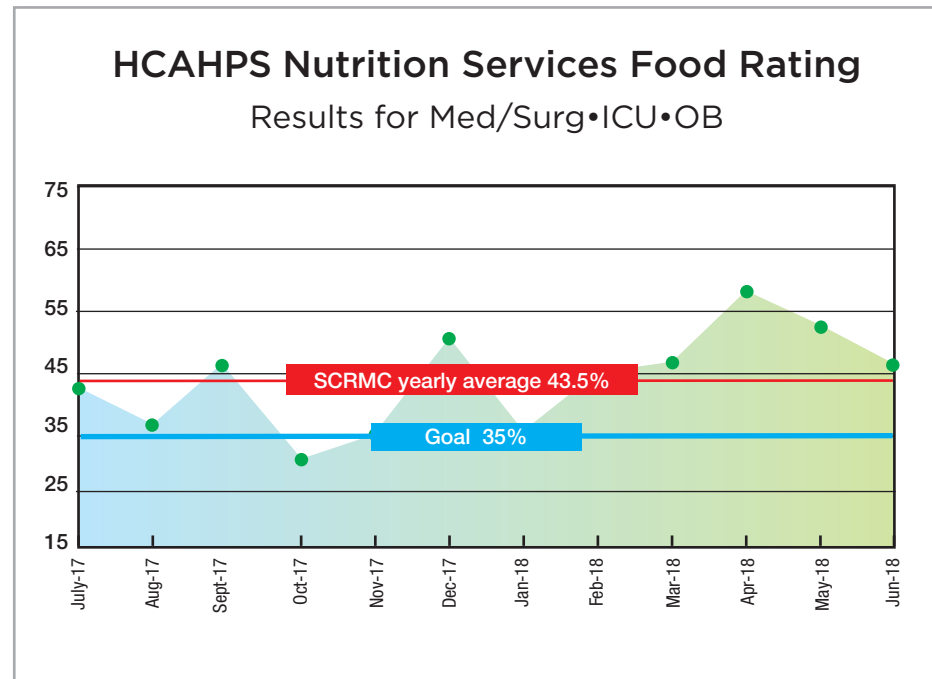


**June 2018**  
**Amy Hilmanowski**  
Curbside Unit Coordinator  
Patient Access Services  
St. Croix Falls

# Quality of Care 2018

Continuous quality improvement at SCRMC requires the ongoing, reliable work of dedicated leaders, medical providers and staff in all departments, along with the leadership of our governing board. This annual report recognizes hard work on strategic initiatives and projects throughout FY 2018.

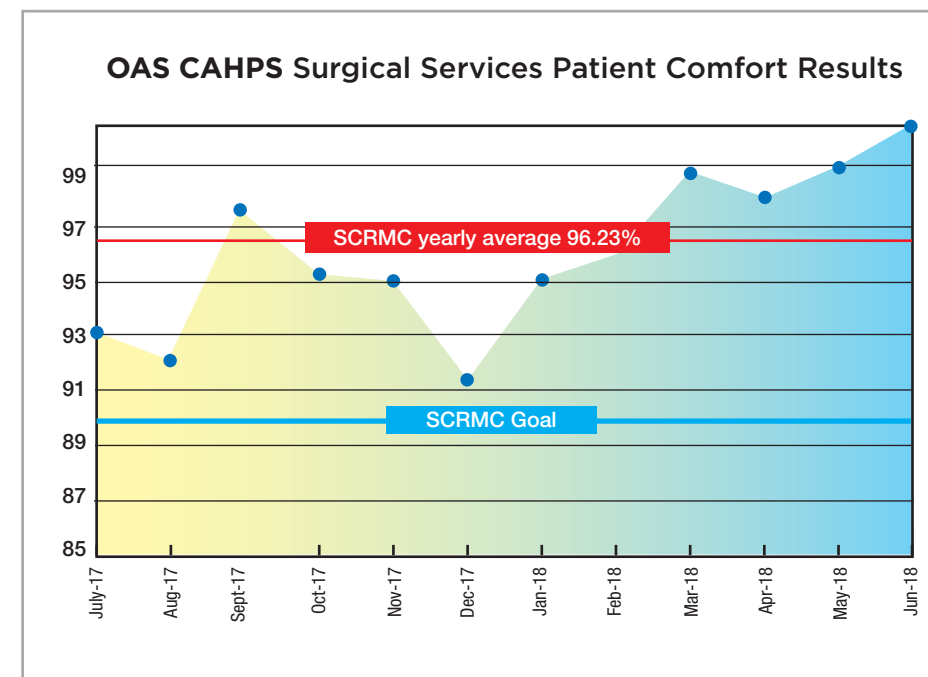
Studies show that patients with better care experiences are often more adherent to medical advice and treatment plans, thus leading to better health outcomes. SCRMC proudly utilizes CMS-approved CAHPS (Consumer Assessment of Healthcare Providers and Systems) surveys to formally survey patients receiving clinic, surgical, emergency, and inpatient hospital services.



The hospital survey asks patients to rate the quality of the food provided during their stay. Nutrition Services worked diligently on customer service this year to improve the patients' experiences with their food during hospital stays. Team members held daily huddles to discuss the patient experience and actively participated in AIDET® (see page 18) training and initiatives to improve communication around Nutrition Services. Hospitality aides working in Nutrition Services had individualized rounding on this survey question and strategies. This year, they exceeded their goal with an average top box rating of food quality of 43.5%.



Surgical Services worked on the overall Likelihood to Recommend question and on a question focused on doctors and nurses making sure the patient is as comfortable as possible. The group did focused work around timely communication with patients, making sure the nurse in same day surgery connected with the patient within five minutes of arrival and keeping families updated at least every ninety minutes throughout the duration of surgery. Bair Paw gowns and standardized temperature monitoring were implemented for patient comfort. The department was able to exceed their patient comfort goal, achieving an average top box score of 96.23%.



## Pain Clinic

The experience of pain, no matter what the source, creates profound effects on physical and mental well-being. In 2018, SCRMC started a comprehensive pain management clinic that offers multi-disciplinary alternatives to opioids.

### The goal of the Pain Clinic is to:

- Reduce the severity of pain and the amount of time pain is experienced
- Increase ability to perform activities at work and home
- Learn new skills for coping with pain
- Improve quality of life

### Chronic Pain Conditions Managed:

- Back Pain
- Neck Pain
- Neuropathic Pain
- Headache and Facial Pain
- Arthritis/Joint Pain
- Cancer Pain
- Complex Regional Pain Syndrome
- Pelvic Pain
- Post Stroke/TBI Pain
- Post-Surgical Pain
- Shingles-Post Herpetic Neuralgia
- Spinal Disorders
- Sports related pain
- Carpal Tunnel Syndrome
- Myofascial Pain/Fibromyalgia

# Managing the Patient Experience

AIDET® is St. Croix Regional Medical Center’s way to communicate with our patients and one another. It is the framework for narrating the care and for introducing ourselves professionally. Below is an overview of what the acronym AIDET® means:

- A** **Acknowledge** Goal: To put patients at ease; to make them feel welcome and comfortable. They are your priority.
- I** **Introduce** Goal: To build confidence and gain the trust of the people we serve.
- D** **Duration** Goal: Manage the patient’s expectation of time.
- E** **Explanation** Goal: Reduce anxiety and concern. Paint a clear picture. Reduce questions, such as “Why is..?” “Why are they doing that?” “What is that I hear?” “What are they doing?” and “What are they saying?”
- T** **Thank** Goal: Demonstrate you care and acknowledge your appreciation of the interaction. Thank them for allowing you to care for them.

## Hourly Rounding

Putting patients first requires more than just clinical expertise—it also requires demonstration of caring and compassion with every patient we encounter. Patients like to know that someone is watching over them and truly cares.

In order to assure every patient’s experience is always met with a nursing team of caregivers who are responsive to the needs of our patients and families, St. Croix Regional Medical Center implemented hourly rounding.

Effective nurse rounding helps manage patient expectations, provides necessary service recovery, promotes quality care, recognizes exceptional caregivers and role model behavior.

Rounding is one of our initiatives that not only fulfills the routine requests that are usually made when the call light is used, but also demonstrates nurses’ availability to the patient and their readiness to anticipate their needs. It’s proactive and allows for nurses to manage patient care and their own time more efficiently.

## Tele-hospitalist

St. Croix Regional Medical Center launched a new Tele-Hospitalist program to complement its already strong hospitalist program. The Tele-Hospitalist program allows patients to see and talk with a remote hospitalist, a doctor who specializes in seeing patients in the hospital, through a real-time audio and video connection. This service gives immediate access to a specially trained hospitalist during overnight hours. The service is very much like a regular physician visit, only the physician is “beamed in” via a rolling stand that is equipped with a digital stethoscope and other diagnostic equipment, as well as a videoconferencing monitor and camera, enabling physicians from remote locations to communicate directly, face-to-face with patients and staff.

Morgan Foizie, PA-C  
SCRM Hospitalist

## Preliminary Comparative Income Statement

	<u>6/30/2018</u>	<u>6/30/2017</u>
<b>PATIENT REVENUES</b>		
Inpatient Hospital	\$24,644,872	\$24,952,340
Outpatient Hospital	100,162,611	86,939,900
Professional and Clinic	49,942,963	43,984,561
<b>Total Patient Revenues</b>	<b>\$175,750,446</b>	<b>\$155,876,801</b>
Government & Insurer Discounts	( \$79,964,152 )	( \$68,342,881 )
Bad Debt Expense	( 2,239,975 )	( 2,944,835 )
Charity Care	( 616,267 )	( 918,394 )
Miscellaneous	1,362,504	1,257,604
CMDI Joint Venture	229,302	180,318
<b>Net Operating Revenue</b>	<b>\$94,521,858</b>	<b>\$85,108,613</b>
<b>OPERATING EXPENSES</b>		
Salaries—Staff	\$28,861,943	\$26,073,236
Salaries—Providers	14,004,364	6,869,605
Employee Benefits	9,774,808	7,283,558
Contracted Physician Fees	6,708,877	12,050,790
Purchased Services	6,903,125	5,916,946
Supplies and Drugs	17,039,656	13,930,964
Building, Equipment and Repairs	3,101,448	2,568,840
Depreciation and Amortization	3,723,114	3,420,960
Interest Expense on Mortgages	113,991	199,377
Rental Expenses	312,948	108,264
Utilities Expenses	690,697	669,938
Other Expenses	2,325,682	2,016,380
Wisconsin Hospital Tax	334,265	362,867
<b>Total Operating Expenses</b>	<b>\$93,894,918</b>	<b>\$81,471,725</b>
<b>Operating Income</b>	<b>\$626,940</b>	<b>\$3,636,888</b>
<b>Non-Operating Net Revenues</b>	<b>\$3,047,836</b>	<b>\$1,712,895</b>
<b>Net Income</b>	<b>\$3,674,776</b>	<b>\$5,349,783</b>

Charity Care: \$616,267  
 Number of applications for Financial Assistance: 469  
 —affecting over 225 families

# 2018 by the Numbers

117,603 Clinic Visits

9,804 ER Visits

112 Robotic Surgeries

995,604 Lab Services

15,931 Radiology Services

1,553 Inpatient Admissions

470 Sleep Studies

1,909 Outpatient Surgeries

1,328 Outpatient Services

483 Inpatient Surgeries

278 Nursery Admissions

# From Our Patients

We just had a baby there and loved it! Dr. Brunclik is wonderful, the nurses and staff were all very kind, helpful, and answered all our questions. •••**Alyssa**

I love that there are so many specialists on staff and available at SCRMC! •••**Kelly**

From the time my daughter arrived by ambulance, to the time we left, the care and attention we received from the providers and nursing staff, was excellent. Due to the excellent care that the Emergency Department staff provided, you turned my nightmare into a promising dream. •••**Anonymous**

I really enjoyed the people working with me. The staff always had smiles and a joyful attitude. They helped me to realize how serious a wound can be. This is an amazing place to come for care. Everyone is very knowledgeable and answered all my questions. •••**Catherine**

I will forever be grateful to SCRMC for getting to the root of my health problems. The staff has always been courteous and helpful; I was also very impressed with the ER and how fast they get patients in. I would recommend this hospital to anyone! It's so worth the hour and fifteen minute drive. •••**Samantha**



**ST. CROIX  
REGIONAL  
MEDICAL CENTER**

235 State Street, St. Croix Falls, WI 54024

800.642.1336 | 715.483.3221 | [www.scrmc.org](http://www.scrmc.org)

Jessica Minor, SCRMC Marketing Manager

Art director/designer: Theresa Jaeger Gedig, digdesign